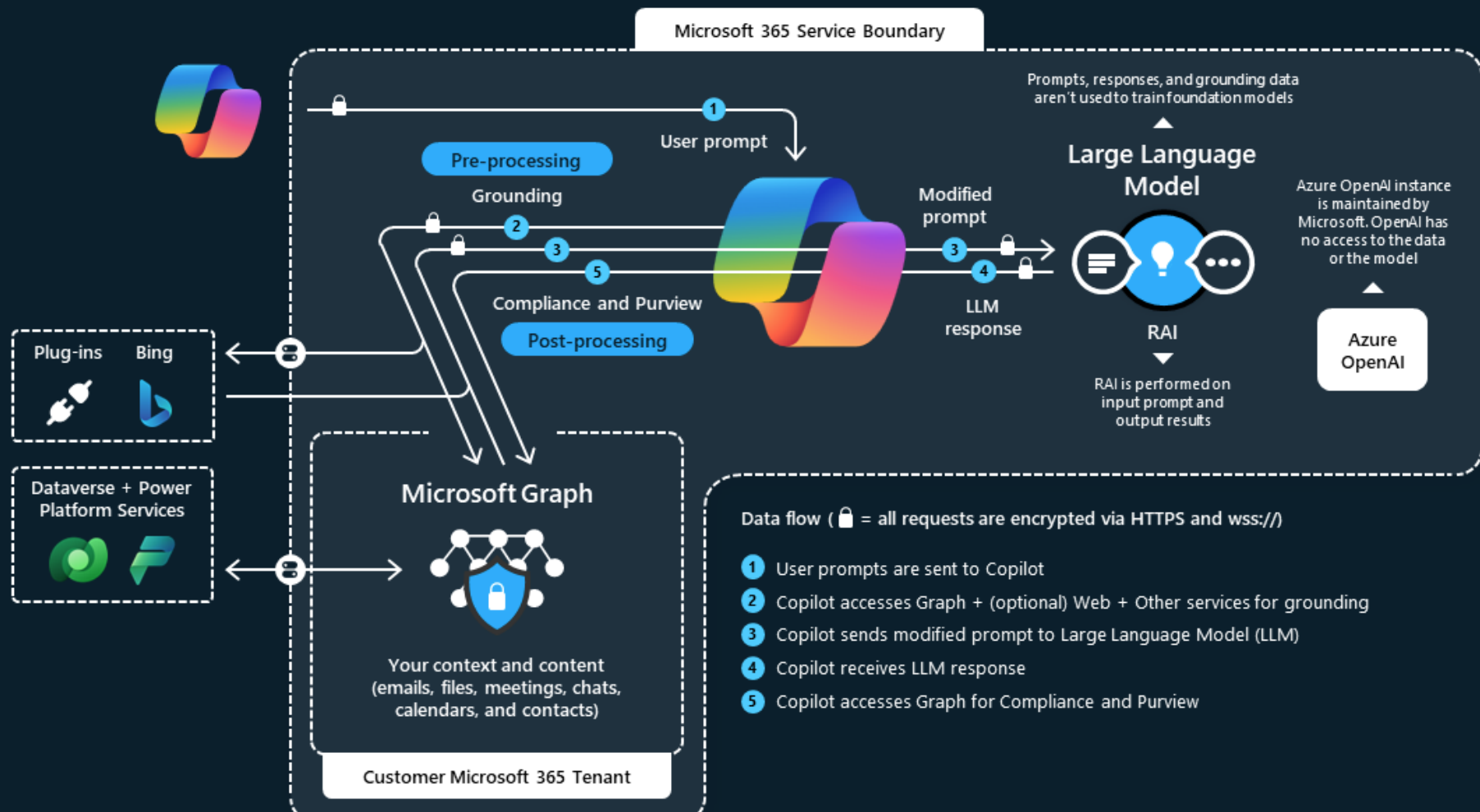


Microsoft Copilot for Microsoft 365 architecture

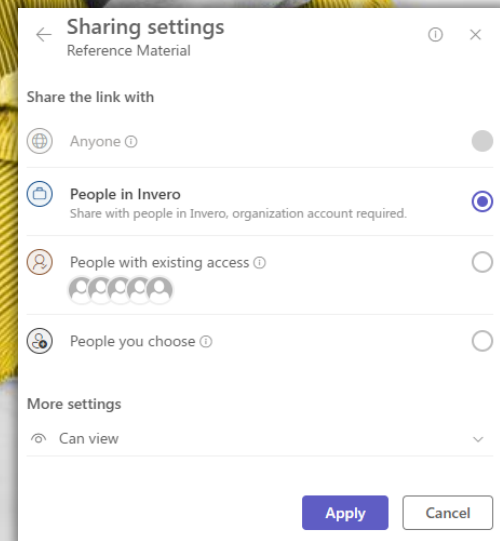


Risks of Deploying M365 Copilot Without Proper Readiness

- ⚡ All data in your M365 tenant becomes available to Copilot through Graph
- ⚡ Inadvertent access to sensitive data through group permissions
- ⚡ People ask inappropriate questions of Copilot to see what they can find out
- ⚡ Not all data is accessible (some stuck on prem) that could benefit Copilot
- ⚡ Usage wanes after the initial hype wears off
- ⚡ Incorrect licensing that leads to paying too much
- ⚡ Older versions of M365 desktop apps are deployed, making Copilot inoperative

What is File Oversharing?

- ✦ Data shared using "People in <Organization>"
- ✦ Creates a link in SharePoint/Teams that grants everyone in the organization access to files/folders
- ✦ Even if specific names are entered into Sharing dialog
- ✦ Problem:
 - ✦ With Copilot for Microsoft 365, this now means that data could be surfaced in generated responses because the user technically has permissions to the data even if they can't find the data without knowing the link



TMI – Too Much Information

❖ Solving the oversharing problem with a tool that analyzes all data across your entire M365 tenant in only 3 Steps

1. TMI scans every SharePoint and Teams object in your tenant
2. TMI interactive reports allow you to analyze the results to identify high risk overshared sites, folders, files
3. TMI can be used to remediate all or some of the overshared sites, folders, files
 - ❖ Remediation removes overshared links and replaces with new individual sharing links for the intended user(s)

❖ First party tools in SharePoint only provide reporting on oversharing that has occurred in the last 30 days and do not have an automated remediation process available



Copilot Readiness Assessment +



Our **Copilot Readiness Assessment** evaluates your current state of readiness for deploying Microsoft 365 Copilot and most importantly conducts a **scan your entire M365 tenant to identify ALL oversharing of files, folders and sites on SharePoint & Teams.**

Our Process

A proven formula.



Step 1: Analyze M365 tenant and Security Requirements



Step 2: Execute Data Oversharing Analysis Tool (TMI)



Step 3: Assess Data Governance and Potential Risks



Step 4: Assess Organizational Readiness



Step 5: Final Report Presentation and Access to TMI Dashboard Reports

Your Deliverables

Driving Digital Performance.

✦ Readiness Assessment Report

A comprehensive document detailing the findings of the readiness assessment, highlighting areas of improvement and recommendations to address before enabling M365 Copilot.

✦ Custom Power BI Oversharing Report

Zero in on the critical areas where there is risk of sensitive data leakage through Copilot across the many sites, folders and files that have been found to be overshared with the organization.

✦ Roadmap and Action Plan

Upon completion of the Readiness Assessment, we will present you with a Roadmap and Action Plan that outlines the path forward for successful Microsoft Copilot implementation.

Your Microsoft 365 Copilot journey with Invero

2 weeks (depends on amount of data in tenant)

Cost: \$14K + \$3K for Remediation



Award-winning Microsoft
Solution Partner

“Born in the Cloud”
company that guides
clients through digital
innovation

Accelerate your cloud
journey and realize new
possibilities today

Contact Us
info@inverodigital.com
604-283-9205



Data Oversharing Analysis Only



Our **Copilot Readiness Assessment** evaluates your current state of readiness for deploying Microsoft 365 Copilot and most importantly conducts a **scan your entire M365 tenant to identify ALL oversharing of files, folders and sites on SharePoint & Teams.**

Our Process

A proven formula.



Step 1: Execute Data Oversharing Analysis Tool (TMO)



Step 2: Access to TMI Dashboard Reports



Step 3: Oversharing Remediation

Your Deliverables

Driving Digital Performance.

Custom Power BI Oversharing Report

Zero in on the critical areas where there is risk of sensitive data leakage through Copilot across the many sites, folders and files that have been found to be overshared with the organization.

Your Microsoft 365 Copilot journey with Invero

1-2 weeks (depends on amount of data in tenant)

Cost: \$8K including Remediation



Award-winning Microsoft
Solution Partner

“Born in the Cloud”
company that guides
clients through digital
innovation

Accelerate your cloud
journey and realize new
possibilities today

Contact Us
info@inverodigital.com
604-283-9205



Comparison of Invero's Two Offers



Copilot Readiness + TMI

- ✦ Analyze M365 tenant and Security Requirements
- ✦ Assess Data Governance and Potential Risks
- ✦ Assess Organizational Readiness
- ✦ Detailed Readiness Assessment Report
- ✦ Roadmap and Action Plan
- ✦ Execute oversharing analysis tool
- ✦ Access to TMI Dashboard Reports
- ✦ ADD-ON: Oversharing Remediation

TMI

- ✦ Execute oversharing analysis tool
- ✦ Access to TMI Dashboard Reports
- ✦ INCLUDED: Oversharing Remediation



Comparison to Other Copilot Readiness Offerings



Depth of Analysis

- ❖ Microsoft and others are using built-in reports from SharePoint Admin and Purview
- ❖ These reports are mostly limited to data/changes in the last 30 day period
- ❖ Invero has developed a proprietary tool to do deep inspection of every file, folder and site across your M365 tenant

Microsoft Best Practices

- ❖ Microsoft has published their recommendations for getting ready for Copilot
- ❖ Invero's assessment follows these best practices
- ❖ However, Microsoft's best practices do not adequately address the data leakage and over sharing issues, which are the most critical

Data Leakage & Over Sharing

- ❖ The biggest advantage to Invero's Copilot Readiness is our **proprietary tool** that we have developed to go beyond what is available out of the box from MSFT
- ❖ The tool inspects all files, folders and sites in the M365 tenant that have been shared throughout all time, not the last 30 days





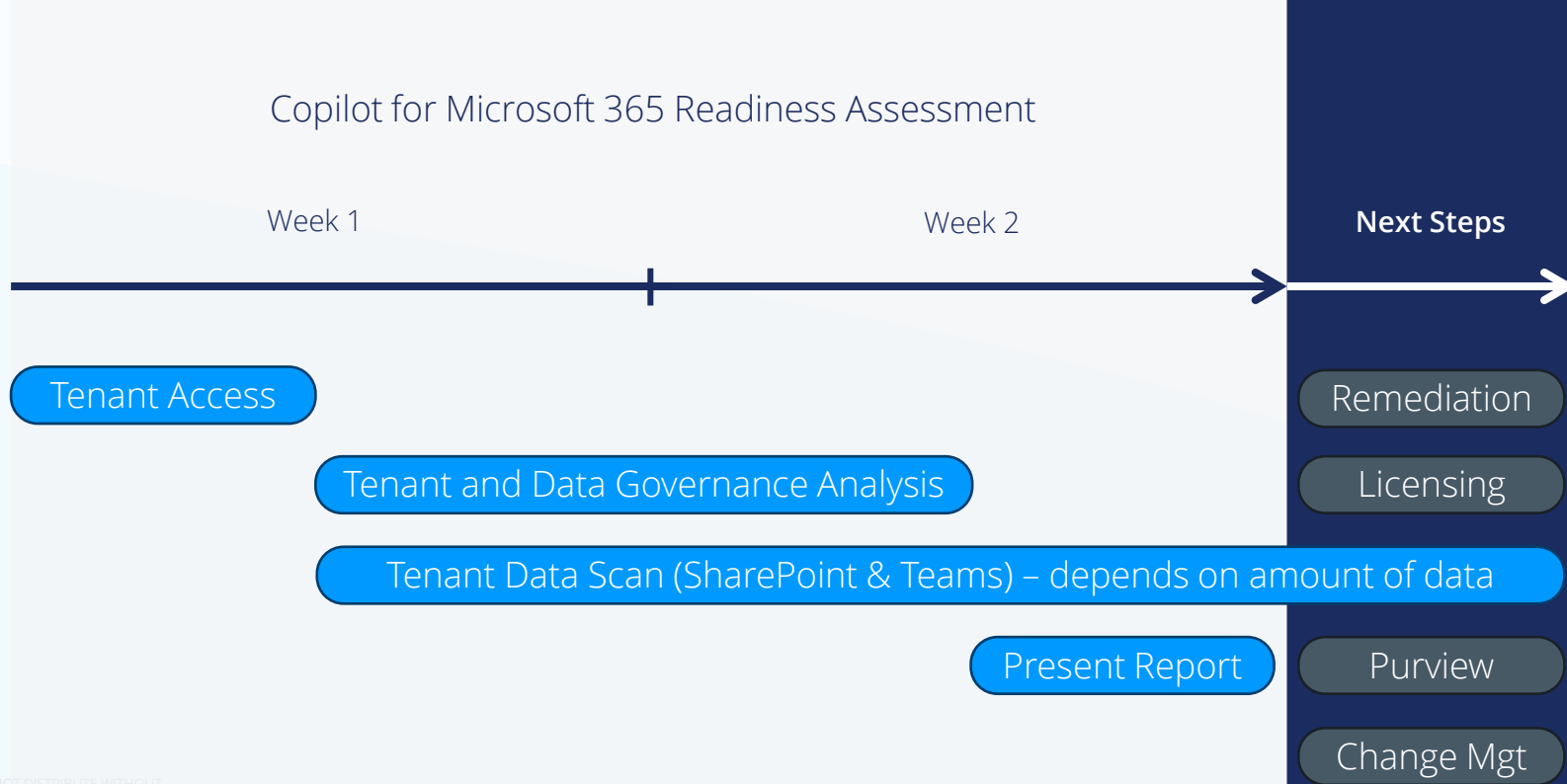
Sample Report Table of Contents



Table of Contents

Executive Summary	4
Introduction.....	7
Methodology.....	7
Findings and Recommendations	9
Files and Folders Shared with Entire Organization	11
Governance to Limit Sharing Documents on Sensitive Sites	12
Licensing.....	16
M365 Desktop Applications.....	16
Web Content in Copilot Responses	17
Copilot in Teams.....	18
Limited Initial Rollout	19
Test Copilot for Data Leakage.....	20
Information Management (Microsoft Purview)	24
Organizational Change Management	26
Appendix A: List of Non-Qualified Update Channel Users.....	31
Appendix B: SharePoint Advanced Management Reports.....	37
"Anyone" links Report.....	37
"People in your organization" links Report	37
"Specific people" links shared externally Report	37
Appendix C: Files and Folders with Oversharing.....	38

Approach & Timeline



Engagement Deliverables



Readiness Assessment Report

- ✦ Detailed findings from the completed assessment including:
 - ✦ SharePoint & Teams Data Oversharing
 - ✦ Data Governance Recommendations
 - ✦ Copilot Pre-Requisites and tenant configuration
 - ✦ Identified Anonymous and External Data Sharing

Custom Power BI Oversharing Report

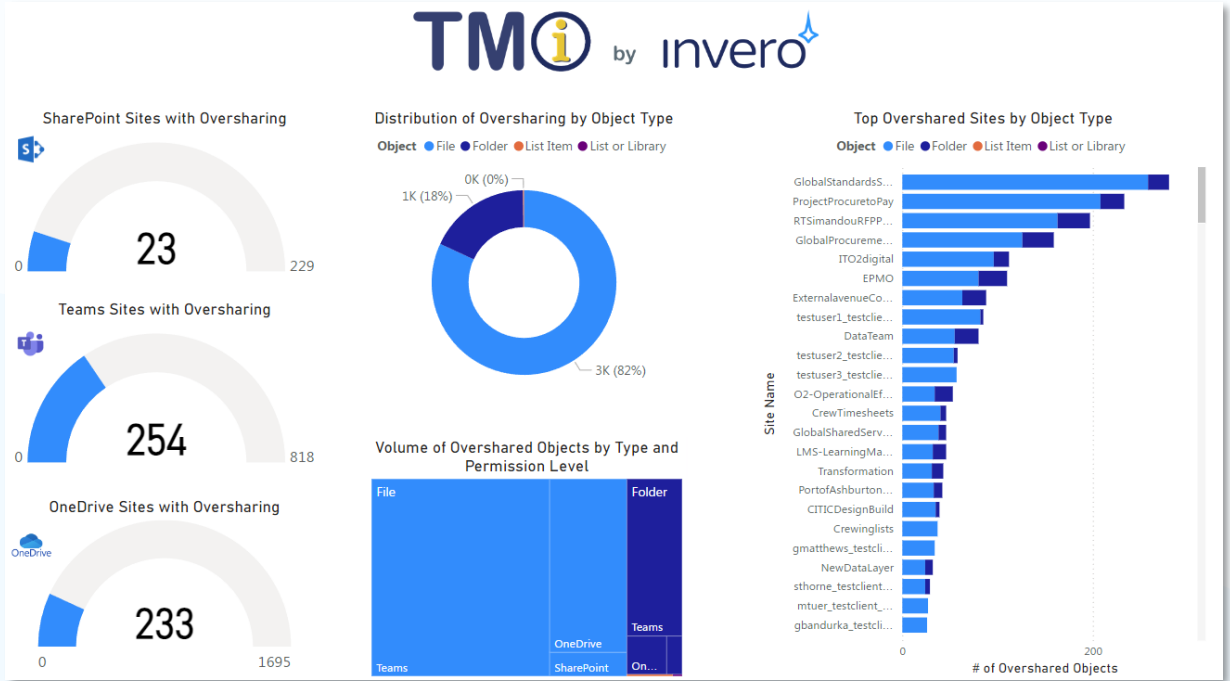
- ✦ A customized Power BI report that aids with navigating through the many sites, folders and files that have been found to be overshared with the organization.
- ✦ The Power BI report helps with zeroing in on the critical areas where there is risk of sensitive data leakage through Copilot

Roadmap & Action Plan

- ✦ A prioritized list of actions based on the results and recommendations from the assessment that should be actioned before conducting a widespread rollout of Copilot for Microsoft 365.



TMI Dashboard



TMI Sites List

Overshared Sites



23

Sites with Oversharing

Filter Results by Site Name

All



Site Base URL

<https://testclient.sharepoint.com/sites/ABCCement-Limestonetrade>
<https://testclient.sharepoint.com/sites/AsiaStrategy>
<https://testclient.sharepoint.com/sites/Bug-SITCRP2>
<https://testclient.sharepoint.com/sites/CompasCrewClaims>
<https://testclient.sharepoint.com/sites/CrewTimesheets>
<https://testclient.sharepoint.com/sites/CustomerPortalAttachments>
<https://testclient.sharepoint.com/sites/EGA>
<https://testclient.sharepoint.com/sites/FleetManagement>
<https://testclient.sharepoint.com/sites/FormsTest>
<https://testclient.sharepoint.com/sites/Galley>
<https://testclient.sharepoint.com/sites/Galleyfr>
<https://testclient.sharepoint.com/sites/GTSAAdministration>
<https://testclient.sharepoint.com/sites/IT-Archive>
<https://testclient.sharepoint.com/sites/ManagementReporting2>
<https://testclient.sharepoint.com/sites/Marketing>
<https://testclient.sharepoint.com/sites/MDrive>
<https://testclient.sharepoint.com/sites/msi>
<https://testclient.sharepoint.com/sites/Operations>
<https://testclient.sharepoint.com/sites/Procurement>
<https://testclient.sharepoint.com/sites/ProjectStanley>
<https://testclient.sharepoint.com/sites/Project>
<https://testclient.sharepoint.com/sites/SDrive>
<https://testclient.sharepoint.com/sites/SPO-Commercial>

TMO by Invero

Overshared sites are defined as SharePoint or Teams sites that have either had permissions set or shared with a link that is accessible to everyone in your tenant, thereby making the permissions on any files included in that folder and subfolders visible to Microsoft Graph and in turn M365 Copilot. Sharing links bypass site level and group permissions that are in place.

Filter by site simply by clicking on the row in the Site Base URL table on the left.

Export any table to CSV: Click ellipses (...) and "Export data"

Overshared Folders Filtered by Selected Site(s)

<https://testclient.sharepoint.com/sites/AsiaStrategy/Shared Documents/Presentations>
<https://testclient.sharepoint.com/sites/CompasCrewClaims/Shared Documents/Canada>
<https://testclient.sharepoint.com/sites/CrewTimesheets/Shared Documents/Change Management/Communications>
<https://testclient.sharepoint.com/sites/CrewTimesheets/Shared Documents/Deployment/Crew lists>
<https://testclient.sharepoint.com/sites/CrewTimesheets/Shared Documents/Documentation>
<https://testclient.sharepoint.com/sites/CrewTimesheets/Shared Documents/Documentation/Client>

Overshared Files Filtered by Selected Site(s)



<https://testclient.sharepoint.com/sites/ABCCement-Limestonetrade/Shared Documents/ABC Limestone Vessel Contract Review.docx>
https://testclient.sharepoint.com/sites/ABCCement-Limestonetrade/Shared Documents/Client Australia Proposal to Adelaide Brighton Cement_Dec_28th_2017.docx
<https://testclient.sharepoint.com/sites/ABCCement-Limestonetrade/Shared Documents/Commercial proposal/Appendix E - Occupational Health and Safety/Service Contractor Pre-Selection Checklist.docx>
<https://testclient.sharepoint.com/sites/ABCCement-Limestonetrade/Shared Documents/GTS/Vessel options.xlsx>
https://testclient.sharepoint.com/sites/ABCCement-Limestonetrade/Shared Documents/Investment Analysis/ABC Limestone Vessel Options_March 8th_2018.xlsx
[https://testclient.sharepoint.com/sites/ABCCement-Limestonetrade/Shared Documents/Project Management/Agenda/ABC Cement Agenda \(December 18th_2017\).docx](https://testclient.sharepoint.com/sites/ABCCement-Limestonetrade/Shared Documents/Project Management/Agenda/ABC Cement Agenda (December 18th_2017).docx)
[https://testclient.sharepoint.com/sites/ABCCement-Limestonetrade/Shared Documents/Project Management/Agenda/ABC Cement Agenda \(January 8th_2018\).docx](https://testclient.sharepoint.com/sites/ABCCement-Limestonetrade/Shared Documents/Project Management/Agenda/ABC Cement Agenda (January 8th_2018).docx)
<https://testclient.sharepoint.com/sites/ABCCement-Limestonetrade/Shared Documents/Risk Assessment/ABC Limestone vessel risk matrix - Fritahla.xlsx>

TMI Sites List



Drill Down by Site

Overshared Sites

Filter Results by Site Name

Site Base URL

<https://testclient.sharepoint.com/sites/ABCCement-Limestonetrade>

<https://testclient.sharepoint.com/sites/AsiaStrategy>

<https://testclient.sharepoint.com/sites/Bug-SITCRP2>

<https://testclient.sharepoint.com/sites/CompasCrewClaims>

<https://testclient.sharepoint.com/sites/CrewTimesheets>

<https://testclient.sharepoint.com/sites/CustomerPortalAttachments>

<https://testclient.sharepoint.com/sites/EGA>

<https://testclient.sharepoint.com/sites/FleetManagement>

<https://testclient.sharepoint.com/sites/FormsTest>

<https://testclient.sharepoint.com/sites/Galley>

<https://testclient.sharepoint.com/sites/Galleyfr>

<https://testclient.sharepoint.com/sites/GTSAdministration>

<https://testclient.sharepoint.com/sites/IT-Archive>

<https://testclient.sharepoint.com/sites/ManagementReporting2>

<https://testclient.sharepoint.com/sites/Marketing>

<https://testclient.sharepoint.com/sites/MDrive>

<https://testclient.sharepoint.com/sites/msi>

<https://testclient.sharepoint.com/sites/Operations>

<https://testclient.sharepoint.com/sites/Procurement>

<https://testclient.sharepoint.com/sites/ProjectStanley>

<https://testclient.sharepoint.com/sites/Projet>

<https://testclient.sharepoint.com/sites/SDrive>

<https://testclient.sharepoint.com/sites/SPO-Commercial>

1

Sites with Oversharing

Overshared sites are defined as SharePoint or Teams sites that have either had permissions set or shared with a link that is accessible to everyone in your tenant, thereby making the permissions on any files included in that folder and subfolders visible to Microsoft Graph and in turn M365 Copilot. Sharing links bypass site level and group permissions that are in place. Filter by site simply by clicking on the row in the Site Base URL table on the left.

Export any table to CSV: Click ellipses (...) and "Export data"

Overshared Folders Filtered by Selected Site(s)

<https://testclient.sharepoint.com/sites/ManagementReporting2/Shared Documents/Fiscal 2018>

<https://testclient.sharepoint.com/sites/ManagementReporting2/Shared Documents/Fiscal 2018/8 November 2017>

<https://testclient.sharepoint.com/sites/ManagementReporting2/Shared Documents/Fiscal 2020/Commercial Monthly Reporting/2.2 March 2020>

Overshared Files Filtered by Selected Site(s)

TMI Folders List



Overshared Folders



Filter Results by Site Name

All

565

Overshared Folders

148

from # of Sites

TMI by Invero

Overshared folders are defined as folders that have been shared with a link that is accessible to everyone in your tenant, thereby making the permissions on any files included in that folder and subfolders visible to Microsoft Graph and in turn M365 Copilot. These sharing links bypass site level and group permissions that are in place.

Export to CSV: Click ellipses (...) and "Export data"

Folder URL

https://testclient.sharepoint.com/sites/Alan/Shared Documents/General
https://testclient.sharepoint.com/sites/AllHandsonSafePartners/WORKING GROUP 1/Documents
https://testclient.sharepoint.com/sites/AsiaStrategy/Shared Documents/Presentations
https://testclient.sharepoint.com/sites/AssetIntegrityandReliability/Shared Documents/General/02_Maintenance Package/2.1 ME/Trillium NOx Technical files
https://testclient.sharepoint.com/sites/AssetIntegrityandReliability/Shared Documents/General/06_PM Data Management
https://testclient.sharepoint.com/sites/AugustFY23forecast/Shared Documents/TCE
https://testclient.sharepoint.com/sites/AugustFY24Forecast/Shared Documents/General
https://testclient.sharepoint.com/sites/AWOFPProjectTeam/Shared Documents/General/AWOE - Project Management
https://testclient.sharepoint.com/sites/AWOFPProjectTeam/Shared Documents/General/Financial Model
https://testclient.sharepoint.com/sites/AWOFPProjectTeam/Shared Documents/General/PPA - DA
https://testclient.sharepoint.com/sites/AWOFPProjectTeam/Shared Documents/General/PPA - DA/DA Submission
https://testclient.sharepoint.com/sites/AWOFPProjectTeam/Shared Documents/General/Project - Cost Management
https://testclient.sharepoint.com/sites/Biofuel5yearsplan/Shared Documents/General
https://testclient.sharepoint.com/sites/Biofuel5yearsplan/Shared Documents/General/California Carbon Reports
https://testclient.sharepoint.com/sites/Biofuel5yearsplan/Shared Documents/General/California Carbon Reports/Carbon Credit Markets
https://testclient.sharepoint.com/sites/Biofuel5yearsplan/Shared Documents/General/Presentations
https://testclient.sharepoint.com/sites/Biofuel5yearsplan/Shared Documents/Strategy Development
https://testclient.sharepoint.com/sites/Biofuel5yearsplan/Shared Documents/Strategy Development/Consulting Request - Carbon Markets
https://testclient.sharepoint.com/sites/BIRepository77/Shared Documents/General/Client Datasets
https://testclient.sharepoint.com/sites/BIRepository77/Shared Documents/General/Finance/Reports
https://testclient.sharepoint.com/sites/BIRepository77/Shared Documents/General/HR Changes
https://testclient.sharepoint.com/sites/BIRepository77/Shared Documents/General/HR Changes/Reports

TMI Files List

Overshared Files



Filter Results by Site Name

All

817

Overshared Files

211

from # of Sites

TMI by Invero

Overshared files are defined as files that have been shared with a link that is accessible to everyone in your tenant, thereby bypassing the permissions on the parent folder or site and making the files visible to Microsoft Graph and in turn M365 Copilot.

Export to CSV: Click ellipses (...) and "Export data"

File URL

https://testclient-my.sharepoint.com/personal/aawn_testclient_com/Documents/Desktop/Aged_Unsold_Report/Master_-_60+_Aged_OGU_Offer_Sheet.xlsx

https://testclient-my.sharepoint.com/personal/aawn_testclient_com/Documents/Desktop/ARLLS_Month-End_03_20_24.xlsx

https://testclient-my.sharepoint.com/personal/aawn_testclient_com/Documents/Desktop/Desktop_2/Archive_Summer_2022/Done/Ara_HC_Stocked_Products.xlsx

https://testclient-my.sharepoint.com/personal/aawn_testclient_com/Documents/Desktop/Desktop_2/Archive_Summer_2022/FP_Supply_Discount/FP_Supply_Discount_Tracking.xlsx

https://testclient-my.sharepoint.com/personal/aawn_testclient_com/Documents/Desktop/Desktop_2/Archive_Summer_2022/Missing_Freights.xlsx

https://testclient-my.sharepoint.com/personal/aawn_testclient_com/Documents/Meetings/ARC_DF_Timbers_Shortages_Review.loop

[https://testclient-my.sharepoint.com/personal/aawn_testclient_com/Documents/Meetings/Automated_CDR_OGU_v1.0_Information_Session_\(in-person_and_teams\).loop](https://testclient-my.sharepoint.com/personal/aawn_testclient_com/Documents/Meetings/Automated_CDR_OGU_v1.0_Information_Session_(in-person_and_teams).loop)

https://testclient-my.sharepoint.com/personal/aawn_testclient_com/Documents/Supply_Chain_Report_-_Ver_4.0.xlsx

https://testclient-my.sharepoint.com/personal/aawn_testclient_com/Documents/Whiteboards/Abdullah_Awn.whiteboard

https://testclient-my.sharepoint.com/personal/acampbell_testclient_com/Documents/sept_time_sheet.xlsx

https://testclient-my.sharepoint.com/personal/achrystal_testclient_com/Documents/Whiteboards/Annotations_-_Andrew_Chrystal.whiteboard

https://testclient-my.sharepoint.com/personal/ademarni_testclient_com/Documents/Whiteboards/MOR_-_Prepare_Power_Point.whiteboard

https://testclient-my.sharepoint.com/personal/agatward_testclient_com/Documents/Whiteboards/Annotations/Annotations_-_Aletha_Gatward.whiteboard

https://testclient-my.sharepoint.com/personal/akoh_testclient_com/Documents/ClientName_Weekly_Pricing_&Market_Report_-_Week_of_May_1_2023.xlsx

https://testclient-my.sharepoint.com/personal/akoh_testclient_com/Documents/Menards_Siding_Program_-_AK_-_09132023.xlsx

https://testclient-my.sharepoint.com/personal/akoh_testclient_com/Documents/Menards_Siding_Program_-_AK_-_09152023.xlsx

https://testclient-my.sharepoint.com/personal/alynn_testclient_com/Documents/1_IT/Coding_Invoices/TELUS_WAN_Inv_2290250_Apr_1_2021.xlsx

https://testclient-my.sharepoint.com/personal/alynn_testclient_com/Documents/8_Budget/FY2021/IT/Budget_IT_FY2021_FINAL_2021-05-13.xlsx

https://testclient-my.sharepoint.com/personal/alynn_testclient_com/Documents/8_Budget/FY2021/IT/hardware/CDW_Invoices/Hardware_History_CDW.xlsx

https://testclient-my.sharepoint.com/personal/alynn_testclient_com/Documents/8_Budget/FY2021/IT/old_files/Budget_IT_FY2021_Draft_2021-05-10_AI_Copy.xlsx

https://testclient-my.sharepoint.com/personal/alynn_testclient_com/Documents/9_D365_Journal_entries/ClientName-000551151_Reclass_ICBC_Insurance_Mar2021_invalid_dimension_combo.xlsx

https://testclient-my.sharepoint.com/personal/amclean_testclient_com/Documents/Whiteboards/Inter_Company_journals_business_process_discussion.whiteboard

https://testclient-my.sharepoint.com/personal/asantoso_testclient_com/Documents/Microsoft_Teams_Chat_Files/RPT114_2017-Present.cvy

Available in Azure Marketplace

<https://bit.ly/tmi-azmktp>



Products > TMI - Data Oversharing Analysis for Microsoft 365



Get It Now

Pricing information
Starting at \$3,000.00/one-time payment for 1 year

Categories
IT & Management Tools

Support
Support

Legal
Under Microsoft Standard Contract
Privacy Policy

TMI - Data Oversharing Analysis for Microsoft 365 [Save to my list](#)

Invero

[Overview](#) [Plans + Pricing](#) [Ratings + reviews](#)

Identify overshared data to avoid surfacing sensitive information through Copilot for Microsoft 365.

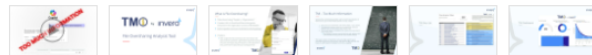
In the age of AI, all of the power of generative AI is driven by the massive amounts of data that the large language models can leverage to produce useful responses. However, what would happen if the data available to these models included information that was not intended to be exposed beyond authorized users?

Tools such as Copilot for Microsoft 365 now expose all data across your entire Microsoft 365 tenant to the power of Generative AI. There are safeguards in place to respect permissions and data governance rules that are enforced by Purview, but the challenge for most companies is not having the appropriate controls in place and not knowing if users at any point in time might have unintentionally shared data in SharePoint or Teams sites/folders/files with the entire company.

There is an industry term for this, and that is called "oversharing." Invero has developed software that we call Too Much Information, or TMI for short, that will pinpoint all data across your entire tenant that has been overshared, even if that sharing was done 10 years ago. Not only will we tell you what data has been overshared, we developed a remediation tool that can optionally remove all overshared links and replace them with the smaller set of intended end users who were supposed to have access to the data.

[Learn more](#)

[Overview of the TMI Oversharing Analysis Tool](#)
[TMI Product Information](#)





One-Time Use Pricing

Oversharing Scan Only

- Full scan of files, folders and lists across tenant for oversharing
- Interactive Dashboard report
- Detailed export of findings

\$5,000

Remediation Add-On

- Remediation only as an add-on to the Scan (when not bought as a bundle)
- Removal of all oversharing links identified by the scan
- Apply direct permissions to individual users (when possible)

\$4,000

Scan + Remediation Bundle

- Full scan of files, folders and lists across tenant for oversharing
- Interactive Dashboard report
- Detailed export of findings
- INCLUDED:** Remediation

\$8,000



Oversharing Sustainment Service

Report & Scan Monthly

- Full scan of files across tenant for oversharing
 - Interactive Dashboard report
 - Detailed export of findings
- \$1,000* / month**

- Optional Add-on:
Oversharing Remediation
+ \$500* / month

Report & Scan Quarterly

- Full scan of files across tenant for oversharing
 - Interactive Dashboard report
 - Detailed export of findings
- \$2,500* / quarter**

- Optional Add-on:
Oversharing Remediation
+ \$1,250* / quarter

Report & Scan One-off / Annually

- Full scan of files across tenant for oversharing
 - Interactive Dashboard report
 - Detailed export of findings
- \$5,000 / scan**

- Optional Add-on:
Oversharing Remediation
+ \$3,000 / scan

* Prices shown include 10% Discount if Paid Annually